

This little booklet is published by

THE KENNEDY HEIGHTS  
BUSINESS MEN'S CLUB.

an organization of the citizens  
of the Village to promote its wel-  
fare and advance its interests.



For additional copies, address  
The Kennedy Heights Business Men's Club,  
KENNEDY HEIGHTS, OHIO.

ROSTER OF BUSINESS ' UB  
OF  
KENNEDY HEIGHTS

Henry Appleton  
W. C. Beschorman  
Martin Burns  
Geo. A. Bieler  
O. W. Bennett  
O. H. Baumes  
Frank Currus  
Aug. Driemeyer  
W. A. Dougherty  
R. A. Dougherty  
Chris. Doar  
John Ehman  
Paul Ehman  
C. F. Ehman  
C. A. Earnshaw  
W. Foerst  
E. C. Fussinger  
H. H. Grant  
F. Gunkel  
W. W. Hunt  
Geo. Hartz  
W. H. Ireton  
Thos. Johnson  
Allen Kissinger  
Robt. Kattenhorn  
T. K. McIlvain

Herman Meissner  
Dr. Chas. Murray  
Frank Mills  
J. D. Morten  
Chas. Mullen  
P. J. McHugh  
C. I. Mullinix  
Louis Niedermeyer  
Henry Mergler  
W. Rheinsagen  
H. Rathkamp  
C. Rathkamp  
Chas. W. Seeger  
J. A. Stewart  
Neil Sullivan  
E. Struve  
W. T. Stemler  
F. P. Thomas  
J. H. Tipton  
Laue Thompson  
Thos. Wilcox  
Ed. Wickemeyer  
C. Wickemeyer  
E. J. Westphalen  
John C. Zinsle  
John F. Zinsle

## KENNEDY HEIGHTS

---

**K**S northeast of Cincinnati, about eight miles from the post office. It is reached by the Cincinnati, Lebanon & Northern Railroad and the Rapid Interurban Electric Railway, requiring thirty minutes by train or forty minutes by electric road.

C. L. & N. trains leave depot on Court Street, east of Broadway.

Interurban cars leave station on Sycamore Street, between Fourth and Fifth Streets.

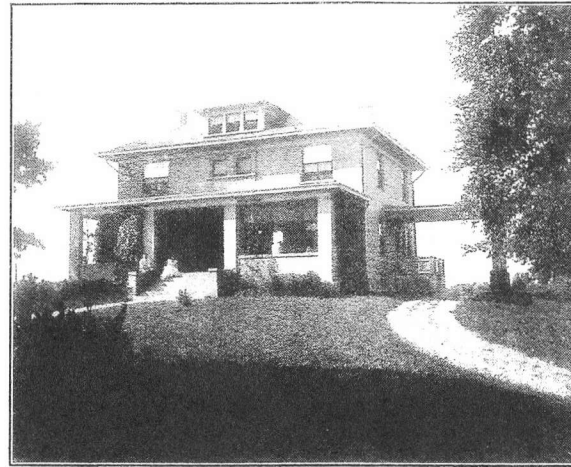
The route of the Interurban Electric Railroad is north on Sycamore to Court Street, east on Court to Gilbert Avenue. Following Gilbert Avenue, it at once climbs the grade past Johnston and Eden Parks to Walnut Hills. On to the northeast, it travels through "The Hills," Evanston and dips down into Norwood. Once more upward, it reaches and passes through Pleasant Ridge and enters KENNEDY HEIGHTS 880 feet above sea level or 450 feet above the Ohio River. One of the advantages of this route is that, ten minutes after

leaving the station on Sycamore Street, we pass Eden Park, and from this point to the almost 900 feet elevation of KENNEDY HEIGHTS the way is through beautiful suburban property, with spacious lawns, flowers, shrubbery, trees and handsome homes.

No hard dusty ride through the city as is the case in reaching many other suburban villages.



W. C. BESCHORMAN  
MONTGOMERY PIKE



W. W. HUNT  
WOODFORD ROAD

The altitude of the location insures fresh and invigorating air. The ground is rolling and the natural drainage simply perfect. The place is therefore beautiful. The residences are surrounded by lawns in which shrubbery and shade trees abound.

Arriving at KENNEDY HEIGHTS, three regular "Stops" in the Village—18, 19 and 20—afford easy access to your nearest streets.

At Stop 19, corner of Montgomery Road and Kennedy Avenue, is the School House, a substantial brick building, heated with furnaces, well ventilated and



P. J. McHUGH  
KENNEDY AVE.

equipped with fire escape. It has spacious play grounds with basket ball outfit and base ball diamond.

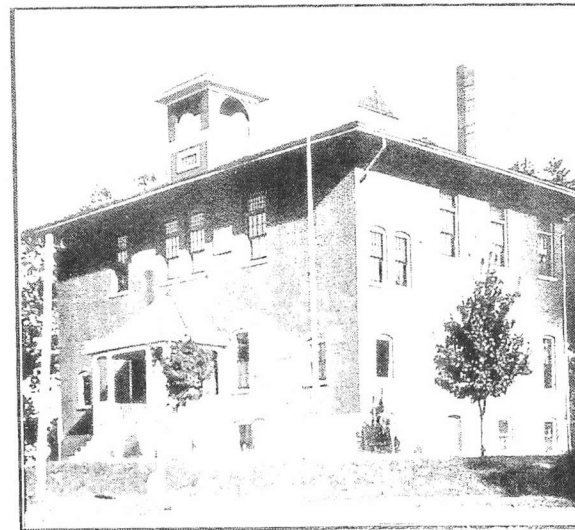
The school course covers the eight grades, established by the Cincinnati schools. The pupils are graduated into the Cincinnati, Pleasant Ridge or other high schools. The Pleasant Ridge High School is on the car line, only one mile distant, cement walk all the way.

KENNEDY HEIGHTS' pupils attend "The Ridge" school without cost for tuition. In case of KENNEDY HEIGHTS' pupils desiring to attend a high school other

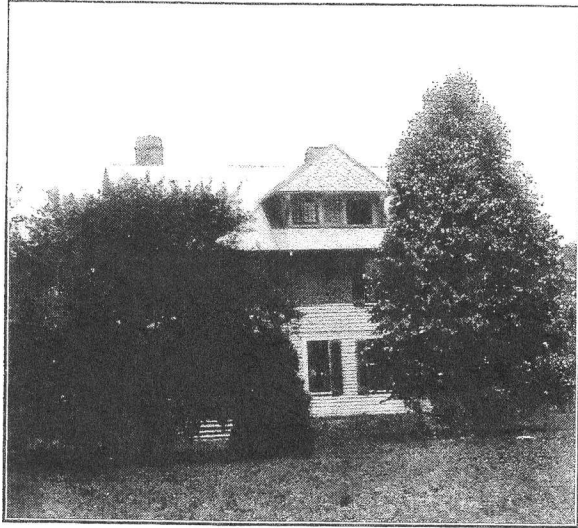
than at Pleasant Ridge, the school board will pay \$30.00 each of the annual tuition.

Opposite the school house is the water tower of sufficient capacity and ample pressure to furnish the citizens with the splendid filtered water of Cincinnati.

KENNEDY HEIGHTS has 11 miles of sidewalks and well made streets, lighted by natural gas furnished by The Union Gas and Electric Co. The citizens of the



KENNEDY HEIGHTS PUBLIC SCHOOL



C. S. EARNSHAW  
VAUGHN AVE.

Village enjoy the privilege of this gas at the low rate of 30 cents per thousand feet.

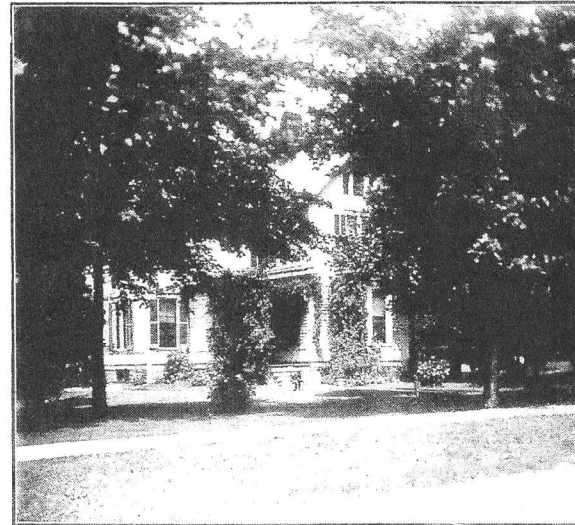
Sidewalks are kept free of snow by Village Council.

Daily deliveries of freight and hourly deliveries of express by steam and electric roads are available.

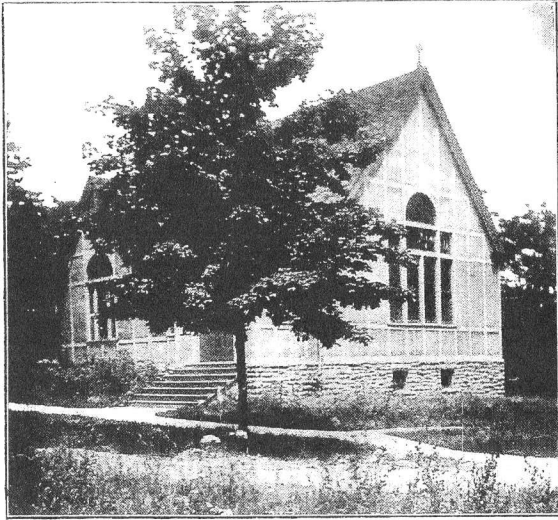
Groceries and stores are within easy access; orders called for and delivered daily.

The large Cincinnati stores make free deliveries.

The telephone rates are the same as those of Cincinnati. The service reaches all of Hamilton County and the towns and villages on the south bank of the Ohio River, in Kentucky.



C. W. SEEGER  
KENNEDY AVE.



EPISCOPAL CHURCH  
KENNEDY AVE. AND AIKENSIDE

Mail is delivered twice per day to the doors of the residents of the Village. All houses are numbered.

There is an Episcopal Church. A Presbyterian Church and Sunday School are also located in the Village, while churches of other denominations are within easy distances.



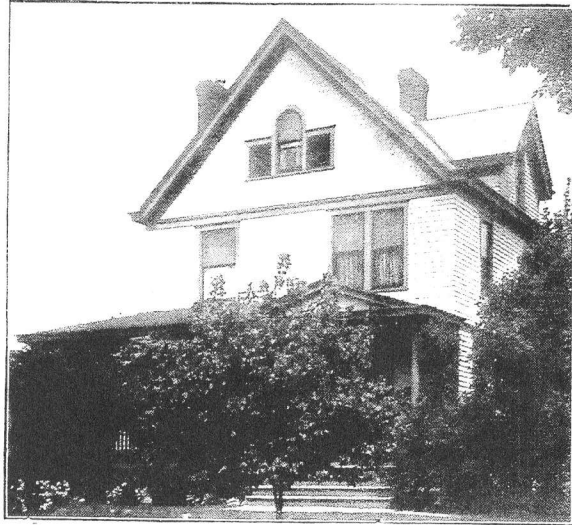
FRANK MILLS  
WYATT AVE.

Yononte Inn is located at KENNEDY HEIGHTS and its situation furnishes opportunity for one of the most beautiful views in this part of the country. This point overlooks a magnificent sweep of valley with hills in the distance. The villages of Norwood and Madisonville are seen in the valleys to the south and east, Walnut Hills on the upland to the southwest, the Fort Thomas water tower and the Highlands of Kentucky to the south and College Hill to the west.



YONONTE INN





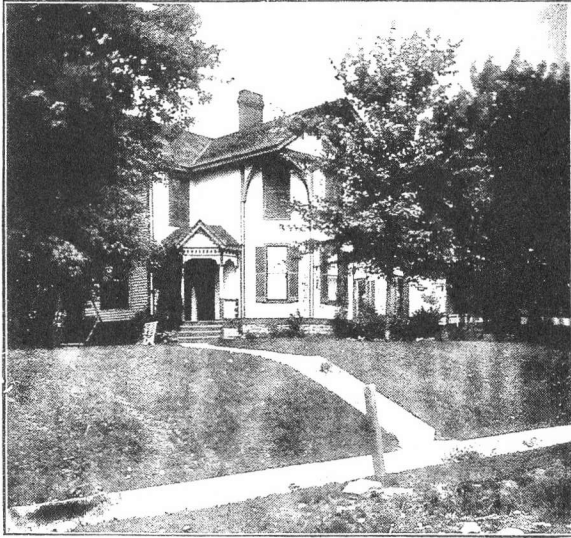
F. P. THOMAS  
MONTGOMERY PIKE

Property ranges in price from \$4.00 to \$20.00 per front foot. Lots in the heart of village, with sidewalks, water and gas, range from \$8.00 to \$20.00 per front foot with a depth of from 150 to 200 feet.

The Electric Railway connecting KENNEDY HEIGHTS with Cincinnati is one of the arteries of the proposed subway and elevated road. When completed this will bring our village within 20 minutes of the Cincinnati Post Office.



E. C. FUSSINGER  
TALFOURD AVE.



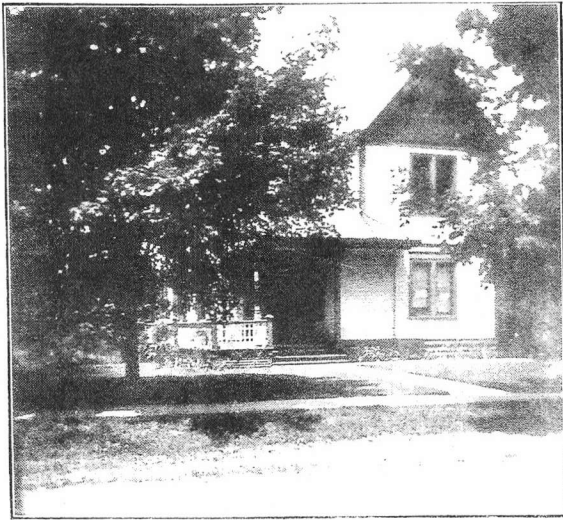
J. H. TIPTON  
KENNEDY AVE.

While KENNEDY HEIGHTS is ideal as a residence location, there is nothing which will attract the manufacturing plant.

If you are seeking suburban property, which affords City conveniences with country air and freedom, this combination is obtainable in KENNEDY HEIGHTS to a degree not found elsewhere.



J. A. STEWART  
WOODFORD ROAD.



W. H. IRETON  
VAUGHN AVE

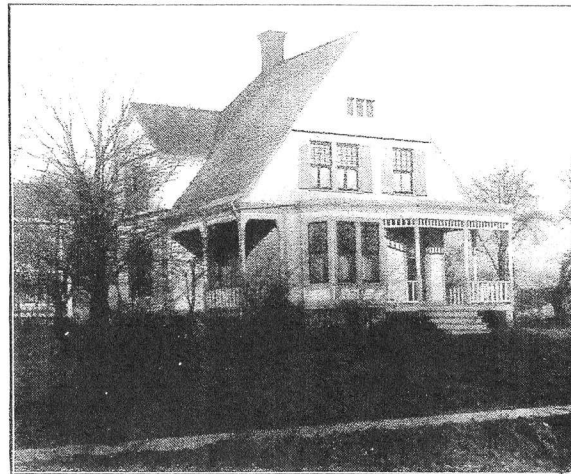
The BUSINESS MEN'S CLUB bids you welcome to our Village as guest or resident. Make a call on us and become acquainted with the beauties of KENNEDY HEIGHTS, "The Garden Spot of Hamilton County."



JOHN C. ZINSLE  
HIGHLAND AND GRANDVIEW AVES.



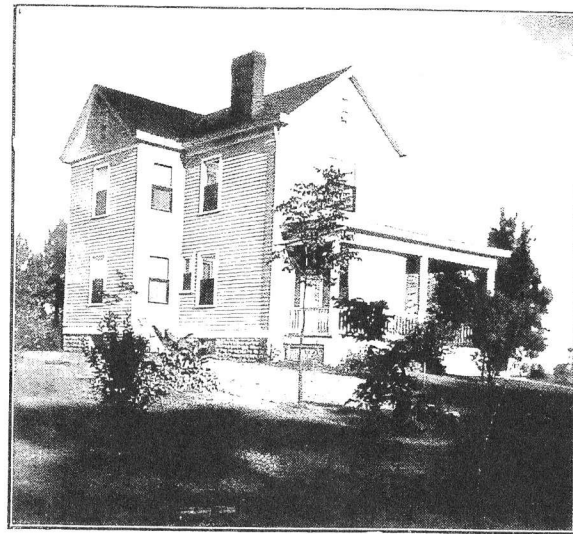
W. T. STEMLER  
SURREY ST



M. BURNS  
KENNEDY AND GRANDVIEW AVES



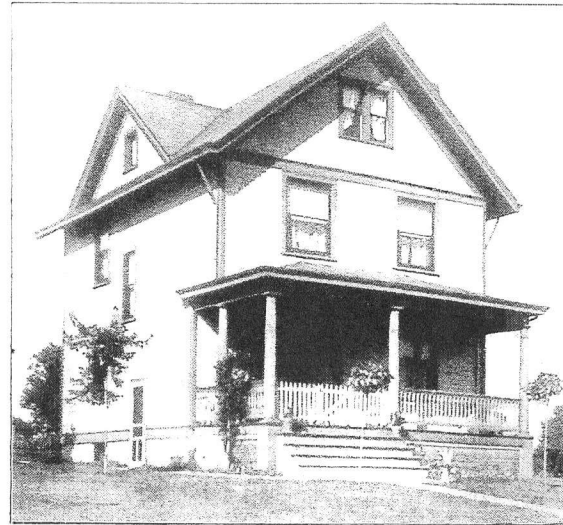
T. K. McILLVAIN  
WOODFORD ROAD



C. DOAR  
KENNEDY AVE



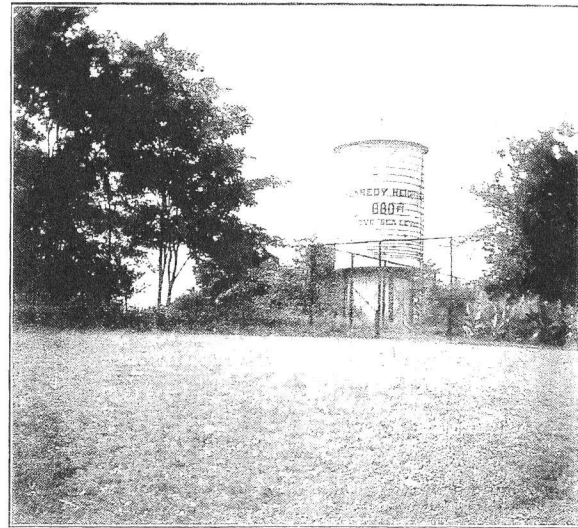
LANE THOMPSON  
KENNEDY AVE



JOHN F. ZINSLE  
3640 ZINSLE AVE



GEORGE BIELER  
KENNEDY AVE.



KENNEDY HEIGHTS 'WATER WORKS'

Dec. 3d, 1907, Deposits = = \$158,603.99  
Sept. 1st, 1909, " = = 627,034.59

**300 % INCREASE**

**In 21 Months**

Safe, conservative and sound banking methods, together with courteous treatment account for this. Give us business. Interest paid on deposits.

THE  
**Norwood National Bank**

East Sherman and Main Aves.

"KENNEDY HEIGHTS FAVORITE BANK"

THE  
**Belmont Land Association**

**FINE RESIDENCE LOTS  
FOR SALE**

Property high, level and well drained.  
Streets improved.  
Cement sidewalks.  
City water and gas.  
Interurban railway passes the property.  
Get off at Stop 19, Kennedy Heights.  
Only 45 minutes from 4th and Sycamore.

RALPH E. CLARK, Sec'y,  
1325 Union Trust Bldg., City.

ALBERT W. SCHELL,  
First Nat'l Bank Bldg.

LOUIS BREUER,  
Pleasant Ridge.

FRANK SCHMITT,  
3469 Colerain Ave.

Trustees.



## THE 'PHONED WAY

As Chief among valued annihilators of both TIME and DISTANCE—the Telephone is *everywhere* accepted. To possess Telephone Service is evidence of business foresight and domestic economy. This modern link between home and office is

## RECOMMENDED TO NOTELS

Cost of Telephone Service is small and service great. Duplex Residence Line only 8½c a day and a Direct Line only 5c a day more. Ask about our FREE Installation Plan. Call Contract Department, Private Branch Exchange, Main 400.

**The Bell Telephone Co.**

314 Vine Street, Cincinnati

## SPECIAL ATTENTION

Is called to

## Kennedy Heights

fronting on Montgomery Road, also C. L. & N. Railroad, about 2 miles north of Norwood. Take Interurban car, get off at Stop 20, or take C. L. & N. Ry. Court, near Broadway. No money required down. Lots, 50x150 feet with fine old forest. Gas, water, cement walks. All assessments paid. This property cost the owners \$10 a foot in hard cash—\$3 a foot will buy them. Every lot lies well, fine drainage, good southwest exposure, no factories, all residence property. This property is 300 feet higher than Norwood from brow to brow. Air is fine. For free transportation and plats make application for same at least a day beforehand, and don't forget our agent will be on the ground every Saturday and Sunday afternoon. Kennedy Heights is bound to be a household word. Money refunded if this property does not double in value inside of a year.

**ROBT. J. CRESAP,**  
118 East 4th Street, St. Paul Building.

COME AND SPEND A DAY

WITH US IN

## Beechwood Park

---

---

**T**HIRTY acres of fine old forest trees and grass. Plenty of water. Take the Rapid R. R. of the Interurban Railway Terminal Company. Cars leave every 15 minutes for the Terminal Building, Sycamore Street, the finest traction depot in Ohio.

---

---

FOR RENT FOR PICNICS, ETC.

ENQUIRE OF THE

Interurban Railway and Terminal Co.